



Silver Crescent, London, W4  
Guide Price £1,450,000

**WHITMAN & CO.**  
SALES · LETTINGS · COMMERCIAL



An immaculate interior designed period home located on this quiet residential street running north off Chiswick High Road. The property has been subject to a meticulous refurbishment in recent years to comprise a double reception room, bespoke 22' kitchen/breakfast room, landscaped west facing garden, full-width principal bedroom with bay window, three further double bedrooms, luxury family bathroom with separate shower, further ensuite shower room, utility room, cloakroom, extensive bespoke built-in storage throughout, integrated NEST heating and hot water system with underfloor heating throughout the ground floor. Silver Crescent is a popular road within a short walk of numerous shops, cafes and restaurants and Chiswick Business Park. Transport links include Gunnersbury Station (District and Mildmay Lines) within a minute walk, local bus routes and the A4/M4 for routes in and out of London.



# Silver Crescent, W4

Approximate gross internal area

159.09 sq m / 1712 sq ft

(Including Eaves Storage)

Eaves Storage : 4.32 sq m / 46 sq ft

Key :

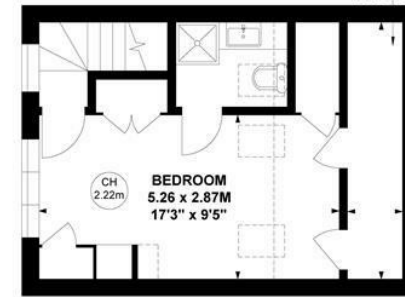
CH - Ceiling Height



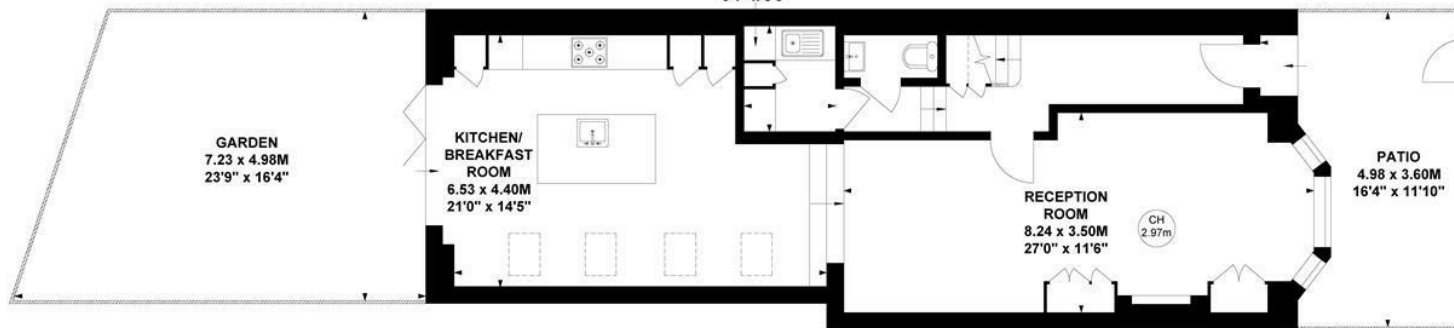
EAVES  
STORAGE  
4.50 x 0.96M  
14'9" x 3'2"



First Floor



Second Floor



Ground Floor

Not to scale, for guidance only and must not be relied upon as a statement of fact.

All measurements and areas are approximate only

- Immaculate interior designed period home
- Bespoke kitchen/breakfast room
- Double reception room

- Fully extended and refurbished
- Landscaped west facing garden
- Quiet residential street close to numerous amenities

Tenure - Freehold  
Local Authority - Hounslow  
Council Tax - Band F

